

KV40DS

Ride-on Vibration Tandem Rollers



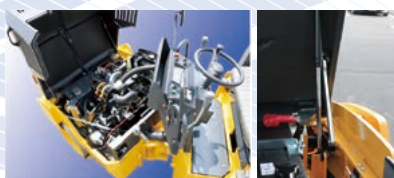
Super Low-noise Construction Equipment



Tier 3 emission regulation compliant

Suitable for small to medium-sized construction sites

Easy maintenance thanks to full open hood
Safety lock bar is provided for strong winds



Certified European Visibility Safety
Standard 1 x 1 Super Low-Noise Equipment



Sprinkler switch and
Sprinkler timer



Inhouse made machined
perfect circle drums
contribute distributing
water evenly with the
spring loaded scrapers

Cylinder roller bearings are used on
the vibration axle for improved durability



Spring loaded scrapers are located at
the front and rear of each drum



High durable impeller
type sprinkling pump

Excellent operability enables highly efficient construction

Employs 310L large water tank



Parking brake switch, Speed mode switch,
Light switch, Back-up beeper switch



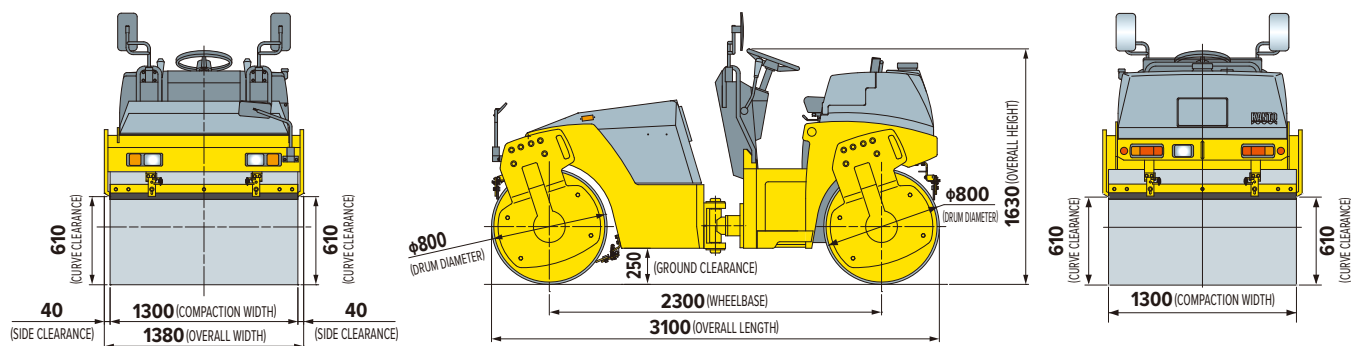
High-intensity front and
rear LED lamps



Articulated steering allows F&R wheels to
run on the same track, contributing high
workability and productivity

Dimensions

Unit: mm



Specifications

Model		KV40DS Steel Drums
CHASSIS MARK		KV40D-4***
WEIGHT		
SHIPPING WEIGHT	kg	3,670
OPERATING WEIGHT	kg	4,000
LOAD ON FRONT	kg	2,000
LOAD ON REAR	kg	2,000
ENGINE		
MANUFACTURER		KUBOTA D1703-EDM
TYPE		3-CYLINDER VERTICAL WATER COOLING, WHIRL CHAMBER SYSTEM
RATED OUTPUT	kW/min ⁴ [PS/rpm]	21.2/2,300 [28.8/2,300]
DISPLACEMENT	L	1.647
DRIVELINE		
TRANSMISSION		HYDROSTATIC TRANSMISSION/2 SPEED
REVERSE GEAR		VARIATION OF DISCHARGE by HYDRAULIC PUMP
FINAL REDUCTION GEAR		DIRECT DRIVE
EXCITATION		
POWER TRANSMISSION		HYDROSTATIC TYPE
MOTION EXCITER		UNIAXIAL ECCENTRICITY
MOUNTED POSITION		LOAD ON FRONT/REAR

Model		KV40DS Steel Drums
PERFORMANCE		
CENTRIFUGAL FORCE	kN [kg]	24.5 [2,500]×2
FREQUENCY	Hz [vpm]	55 [3,300]
STATIC LINEAR LOAD N/cm (kg/cm)	F	151 (15.4)
	R	151 (15.4)
DINAMIC LINEAR LOAD N/cm (kg/cm)	F	339.5 (34.6)
	R	339.5 (34.6)
SPEED RANGE	km/h	LOW 0-7.5, HIGH 0-10.0
GRADEABILITY	%(deg)	40 (22)
MIN. TURNING RADIUS	m	4.3
BRAKE SYSTEM		
MAIN BRAKE		HYDROSTATIC BRAKE
PARKING BRAKE		WET MULTIPLATE BRAKE (MECHANICAL)
STEERING SYSTEM		
SYSTEM		ARTICULATE TYPE
TYPE		FULL HYDRAULIC TYPE
OTHERS		
SPRINKLER UNIT		ELECTRIC PRESSURE-FED TYPE (PRESSURE ATOMIZATION)
FUEL TANK	L	50
SPRINKLER TANK	L	310
HYDRAULIC OIL TANK	L	35

Optional equipment

- Seat belt
- Canopy



KANTO TEKKO CO., LTD

Head Office: 852-4 Shimokatata, Koga-shi,
Ibaraki-ken, 306-0127, Japan

TEL:+81-280-77-0081 FAX:+81-280-77-0080

KANTO-TK

Search

Please search "KANTO-TK" on internet.
You can find our webpage instantly.

- If you have any question...