

KT40S

NEW

Pneumatic Tired Roller

KANTO



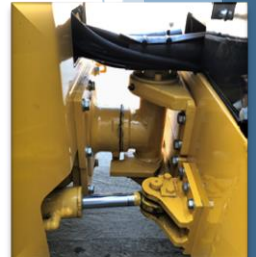
- Articulated turning allows the front and rear wheels to follow the same track, improving operability and productivity
- No discomfort with the same driving feeling as a 4ton combined roller
- All-wheel drive provides a clean finish without pushing or dragging
- Large tires (273mm width and 812mm diameter) for deeper compacting
- Large-capacity 330L water spray tank



Arrangement of each device for easier maintenance



High durable impeller type sprinkling pump



Articulated turning system



Antifreeze tank for water sprinkling piping



New instrument panel



Switches for water spray, timer and liquid spray



Switches for speed change, lighting and reverse buzzer

KANTO TEKKO CO., LTD.

852-4 Shimokatata, Koga-shi,
Ibaraki-ken, 306-0127, Japan

TEL: 0280-77-0081
FAX: 0280-77-0080
URL: www.kanto-tk.co.jp